



# The Heritage Lottery Project



**This year has been a very busy year for the trustees and the volunteers.**

Working in the development year of Heritage Lottery Funding is proving to be both challenging and rewarding. There are important targets to meet and the funding has enabled the trust to have the help of consultants to work with us on the Stage 2 bid. Jess in the administrator role is kept busy managing many of the tasks requiring computer skills.

There is a display in the porch at St Seraphim's outlining the plans, with the architect's drawings. Jess was responsible for much of the display work, aided capably by Simeon who came to Walsingham with his wife Jill from Exeter and valiantly helped through a deadline. Simeon helps with our website and is a valued volunteer. The display was used at the Volunteer Day in Fakenham on Thursday September 27<sup>th</sup>, 2012, arranged by another valued supporter of St Seraphim's, Jonny Wood of Voluntary Norfolk.

**St Seraphim's Trust would like to express grateful thanks to our funders, supporters and friends :**



# Garden Developments!



The community payback volunteers continue to work on the garden project and we thank them for their work carried out in all weathers. St Seraphim's Geese Una and Wanda have a bespoke wooden hut to shelter in from the winter weather, made with wood left over from the making of the top lookout hut and with a felt roof so it matches the volunteer hut.

Courtesy of funding from the Norfolk Community Foundation and work by the payback digging a trench the length of the garden we have electricity and CCTV right up to the top hut. Sheringham Shoal generously gave £5,000 for the re-

building of the workman's hut and for more plants. Some of the original timbers will be included in the cladding of the structure. Some of this funding was used to purchase 3,000 bulbs which were planted by

the Workout Project on Friday September 28<sup>th</sup>, 2012.

Thank you Mark and Finn, who have led the Workout Project over 3 years on their visits to St Seraphim's Community Garden. The visits of the Workout Project are always enjoyable as well as a great help. The photos show the Workout volunteers planting the bulbs and giving farewell gifts to Mark and Finn from the volunteers. Thank you everyone for a lovely afternoon. We look forward to seeing you in the New Year.

**March 1<sup>st</sup> 2013 - diary date for our next Workout project visit** – to see the spring bulbs and to combine with a visit from Walsingham WI who are generously donating a bench for the garden in recognition of the Diamond Jubilee of the Queen this year. Thank you Workout Project and Walsingham WI and thanks to Sheringham Shoal.

Other volunteers come independently and get on with weeding, thank you each and every helper. The garden is slowly taking shape and everyone's contribution makes a difference.



## The Railway—talk by Walsingham & District History Society

On the 1<sup>st</sup> November 2012 the Walsingham and District History Society meeting was on the subject of the Wells and Fakenham railway. Adrian Vaughan gave an informative and very interesting account of the development of the railway with photographs. The chairman of the History Society spoke at the end about the work of the Trust involving railway herit-

age and for this, thank you, Tim.

Following the talk, Adrian took some of us to visit a restored platelayer's hut and it was a jolly outing, thank you, Adrian.

We are keen to find a volunteer to help with the railway heritage memorabilia and archives.

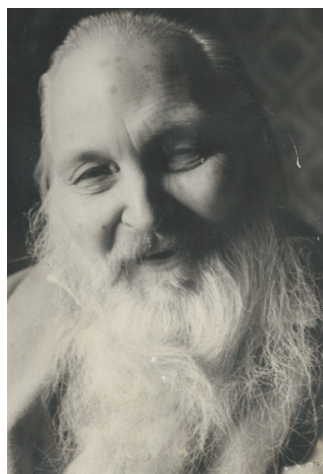


*Photo taken by F.X. Newton in the 1950's*

# The Chapel

St Seraphim's day on July 19th was a happy occasion and Father Michael and Judy came at the end of their holiday in the Scottish Isles. Thank you Father Michael for serving the liturgy and thank you both for your support. Others who come regularly on St Seraphim's Day, thank you, it is lovely that you come. Eugenie from Wisbech came with her friends John and Shirley – Eugenie is originally from Thessaloniki.

Another visitor from Thessaloniki came about a month ago, unexpectedly. In answer to the doorbell, I discovered a pilgrim looking for the grave of Dimitrios Koutroubis – and I was



able to take him there. The visit was prompted because the pilgrim, who never met Dimitrios, had been deeply moved by reading his writings and decided, while spending a month in Cambridge learning English, to visit the grave. Dimitrios also had arrived unexpectedly in 1981 and he touched the hearts of the Orthodox community then.

1st March 2013 will be the 30th anniversary of the death of Dimitrios Koutroubis. Eternal Memory!

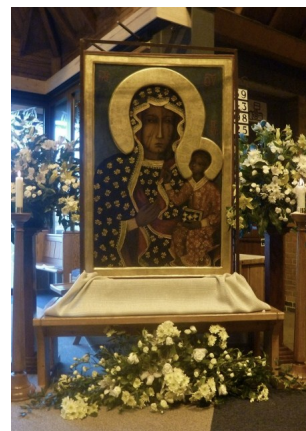
St Seraphim's Chapel has many visitors and largely they come and visit the Chapel and then quietly leave. Those who write in the visitor's book, thank you! Your comments are welcomed and valued and let us know you have visited the chapel.

As part of the Ecumenical Marian Trust Pilgrimage to Walsingham in March 2013, Metropolitan Kallistos will serve the Liturgy at St Seraphim's at 10.30 a.m. on Friday 15th. This occasion is always welcomed,

as Metropolitan Kallistos knew Father David and there are many shared happy memories.

The replica icon of Jasna Gora was in Walsingham from Wednesday 7<sup>th</sup> November 2012 until Friday 9<sup>th</sup>, as part of the 'Ocean to Ocean' pilgrimage, from Vladivostok to Fatima, in defence of life.

This was a moving experience, witnessing the veneration of the icon and hearing the Polish Choir singing while people made their silent prayers following the Mass. Father Cezary Kraczkowski from Peterborough Polish Mission spoke about the place the icon has in the lives of the Polish people.



## Pro-Help Breakfast

On Friday 9<sup>th</sup> November 2012 several people involved with St Seraphim's went to the Hethersett Park Farm Hotel for breakfast, organised by Pro Help – among the group were Chris Allen, a valued volunteer for St Seraphim's Trust, Giles Kerkham and Mike Brookes of Larking Gowen, who are helping us with the Heritage Lottery Bid, and Jess and Sylvia. There were over fifty people, including

Norman Lamb. Giles spoke on behalf of St Seraphim's Trust, describing the aims of the Trust and the ongoing work, and in the eight minutes he was allotted Giles managed a magnificent presentation that generat-



ed a lot of interest in the project: Thank you Giles, Mike and Chris for your sterling work and thanks Jess for going with me. Thank you Pro Help for the invaluable help we receive through your work, thank you Lynda for the delicious breakfast and for all your supportive help.



**The Chapel of St. Seraphim** is a place of Orthodox Christian worship. The Faith to which it bears witness is that of the Undivided Christian Church before West and East became separated in the Eleventh Century. Its ancient tradition of worship and prayer is rooted in its biblical and apostolic inheritance, and is expressed in living symbolic form.

In 1966 the Anglican Shrine authorities asked that someone be sent to take care of the Orthodox chapel there, and Father Mark Meyrick (who subsequently became a monk, with the name David) came to undertake that task. It was soon apparent that the open plan construction of the chapel was unsuited to a pattern of regular services and in 1967 Father David and three companions, with £25 between them, settled in this building which, until the closure of the railway in the early 60s, had been Walsingham's station on the line between Wells and Fakenham. They converted the booking hall and ticket office into the nave and altar of their new chapel, and crowned it with bell tower, onion dome and cross. The painting and selling of icons was, from the outset, an important part of the Orthodox witness here. Following Father David's death in 1993, his colleague Leon Liddament continued and developed that tradition until his own death in 2010.

## ST. SERAPHIM'S TRUST

**Station Road  
Little Walsingham  
Norfolk, UK,  
NR22 6EB**

**Tel: 01328 820610**

**Email: [sylvia@iconpainter.org.uk](mailto:sylvia@iconpainter.org.uk)**

**Web: [www.iconpainter.org.uk](http://www.iconpainter.org.uk)**

*Registered as a charity, no 1120335  
Registered as a company limited by  
guarantee, no 6287991*

**A Happy Christmas  
and a peaceful 2013 to  
you all.**

**Christ is Born!**



## Question Time!

There is an online questionnaire on the Trust website ([www.iconpainter.org.uk](http://www.iconpainter.org.uk)) to help us gather the views of people so we can improve the plans we have to enable the pilgrims and visitors to learn more about Icons and to explore the railway heritage. We would be grateful for responses to this questionnaire by **mid-January 2013**.

On 27th Sept 2012 Kate Elliott held a consultation for St Seraphim's Trust at Walsingham Farm Shop, to inform people about the plans for the development of the heritage at St Seraphim's, both iconography and railway and to ask people for their thoughts. Several people

responded to the request for photographs of Icons commissioned by Fr David and Leon: your responses have been good, giving an insight into what the icons have meant to you, as well as some lovely memories of visits to the Chapel.

Please, if you have an Icon or a memory, let us know!



*The coldest day of the year, with hail and wind, thank you Kate and well done!*

We have a long way to go to fulfil our aim to open up the building and garden to the public, as well as repairing and restoring the chapel and premises and having a heritage display of the Iconographers work and of railway memorabilia.

The support and help we are receiving from individuals and groups enable us to continue to work towards our aim, Thank you all.

***Thank you to all our loyal supporters and donors. Your time, care, skills and money make a huge difference to St Seraphim's, indeed you have made all this work possible!***